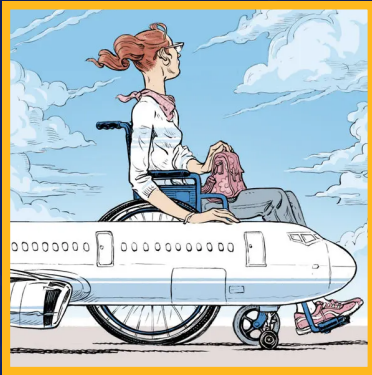


ACCESSIBLE AIRLINE TRANSPORTATION FOR MOBILITY DEVICE USERS: SURVEY

PRINCIPAL INVESTIGATOR: Rory Cooper, PhD



PURPOSE

The purpose of this study is to estimate pent-up demand among mobility device (MD) users to travel on commercial airlines and identify MD users' needs and pain points.

STUDY REQUIREMENTS

For this study, we will ask you to complete a survey about your demographics and airline travel experiences. The survey is expected to take no more than 20 minutes to complete.

<https://tinyurl.com/4f2d6u6j>



LEARN MORE

To participate or learn more, contact our team at 412-822-3663 & mention the "Airline survey"

ELIGIBILITY REQUIREMENTS

MOBILITY DEVICE USERS


- You are 18 years of age or older and;
- You use a mobility device (e.g. manual/powered wheelchair, scooter, etc.) for primary means of mobility.

CAREGIVERS

- You are 18 years of age or older and;
- Have traveled with mobility device users on airplanes.

Thank you for your consideration and help with our research!

 @herlupitt

 /herlpitt

**Human Engineering
Research Laboratories**
6425 Penn Ave, Suite 400
Pittsburgh, PA 15206

